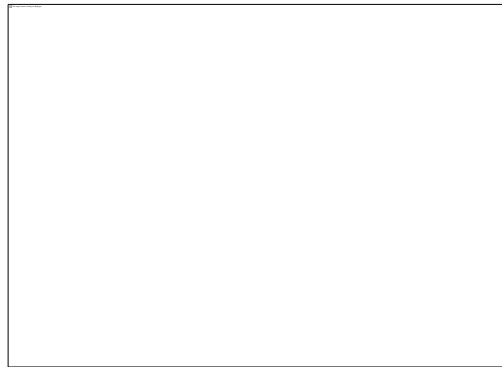


Genomic prediction for detailed milk protein composition

Grum Gebreyesus, Mogens Lund, Bart Buitenhuis, Ninna Poulsen, Henk Bovenhuis, Luc Janss

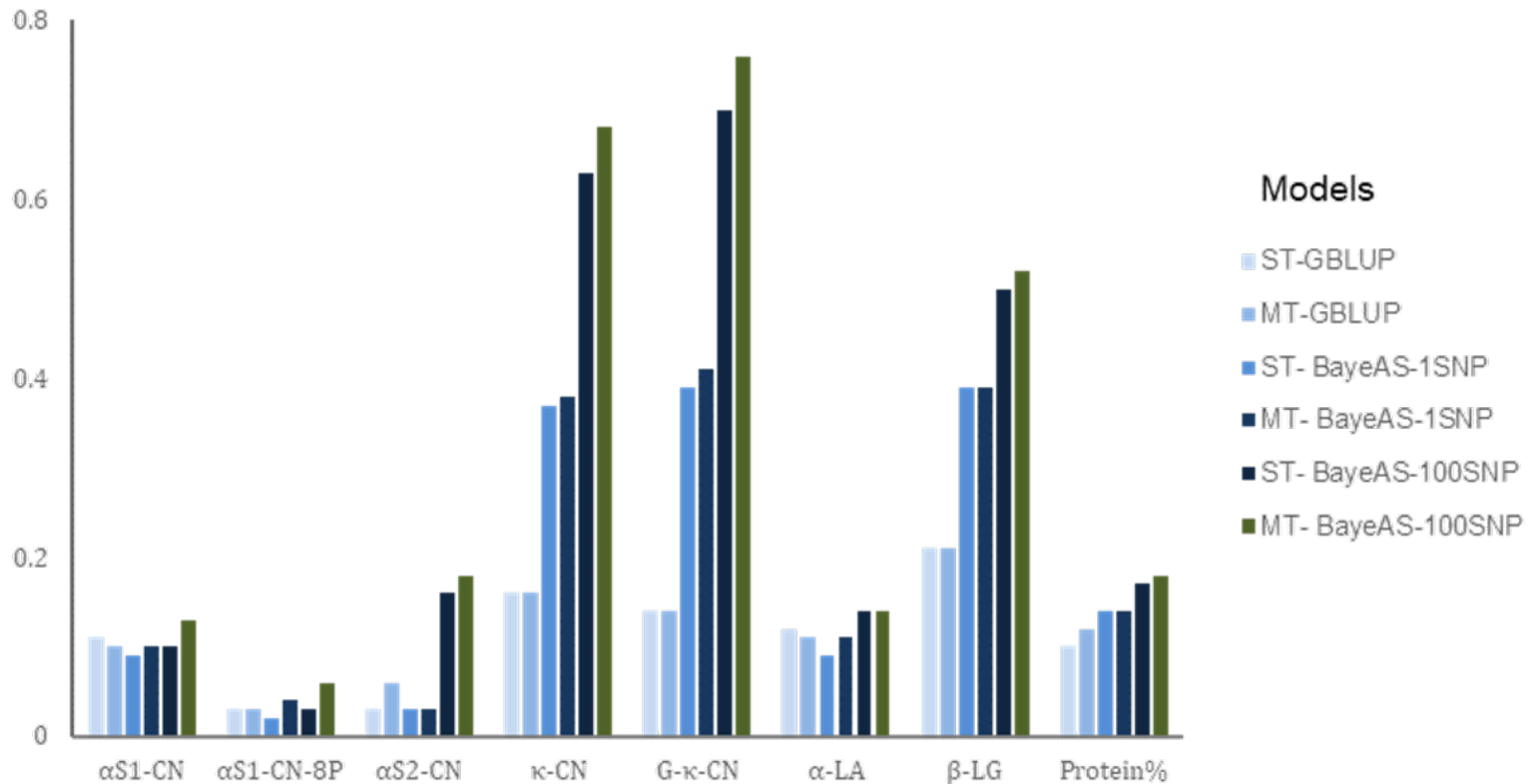
GenSap Nov. 16, 2017



Small-scale large-scale prediction

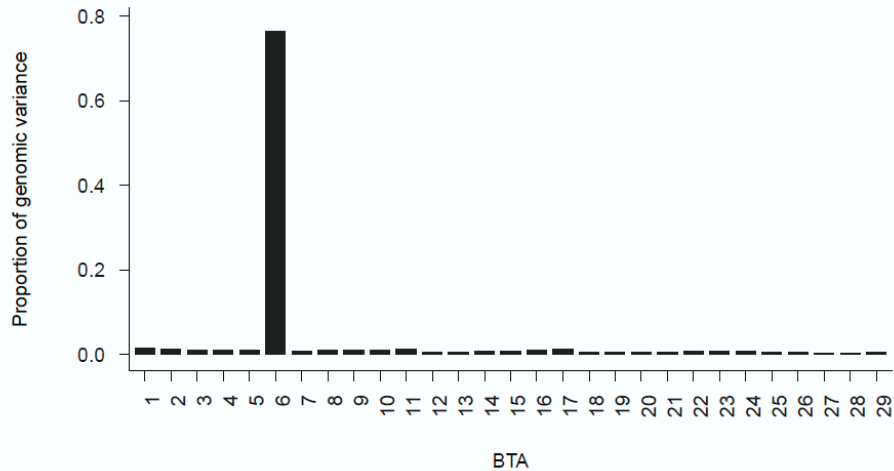
- Small data from cows on detailed milk protein
- DRP on protein yield from large population of bulls
- BayesAS models
- SNP-segments of different sizes
 - 1, 50, 100, 200, chromosome, genome

Improved reliability

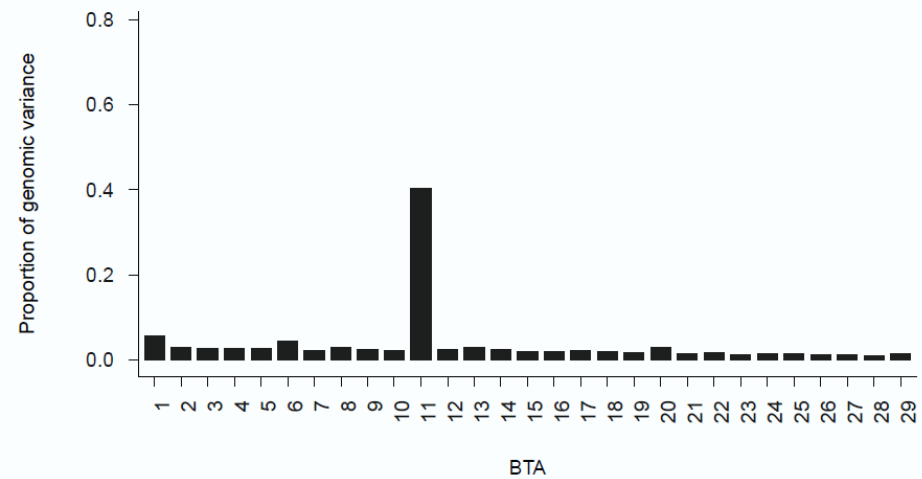


Segments of large-effects

κ -CN



β -LG



Few segments can predict better

